

North Bute Primary

Standards and Quality report 2010-2011

Improvement Plan 2009-2012

Management Plan 2011-2012



Contents

- ◆ Standards and Quality report
- ◆ Aims
- ◆ Previous improvement plan priorities
- ◆ Work and life of the school
- ◆ Vision and Leadership
- ◆ Successes and Achievements
- ◆ Improvement plan overview
- ◆ Priority 1
- ◆ Priority 2
- ◆ Priority 3
- ◆ Priority 4
- ◆ Maintenance Agenda
- ◆ Collegiate Calendar
- ◆ Collegiate activities

Standards and Quality report - key purposes

- to report on our progress in implementing priorities in school plan
- to indicate the progress made in meeting agreed targets
- to provide an evaluative summary of the quality of work across a range of areas in the school
- to highlight strengths and identify priorities for next year



Background Information



North Bute Primary School is situated in Port Bannatyne on the Island of Bute, which lies in the Firth of Clyde, 37 miles to the west of Glasgow. The island is 15 miles long and has a population of over 7,000. The school is situated at the edge of the village on the shores of Kames Bay, and with a beautiful outlook over the waters of the bay towards the hills of Cowal. The village itself has a colourful history. At the turn of the 20th century it was a busy port of call for Clyde puffers and passenger ships. During the Second World War midget submarines exercised in the bay and nearby Loch Striven before setting off to engage in battle with the German warship, Tirpitz. Today the port is a haven for visiting yachtsmen, golfers and water sports enthusiasts. The mainstays of Bute's economy are the hospitality sector, agriculture, retail business, and construction, together with several sizeable individual enterprises including TSC (Call Centre), FlexiTech (electronics), Rothersey Creamery, Bute Fabrics, Ardmaleish Boat Building, and Bute Foods.

The school's catchment area includes the rural areas at the north end of the island as well as the village of Port Bannatyne.

Our School

The main building was built in 1845 and comprises an office, classroom, general purpose room and dining room where lunches are served. Upstairs there is an additional classroom, staff room and storeroom. There is a tarred playground area with one further classroom in hatted accommodation.

North Bute Primary School has a welcoming ethos based on a sound partnership between staff, pupils, parents and members of the local community. The parent council, parents and members of the community are extremely supportive of the school and provide invaluable help with fund-raising and social events. The school is truly at the heart of the local community. The small size of the school helps us to develop a strong and mutually supportive family atmosphere -

A family of families!



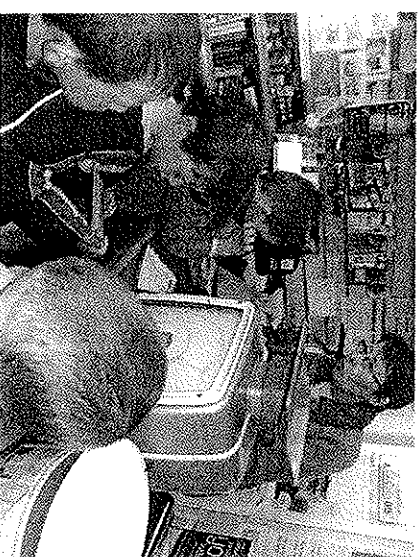
Our Vision

North Bute Primary will continue to:

- ◆ *Be a safe, caring and motivated learning community*
- ◆ *Encourage independent and creative thinking to help all children to achieve their full potential*
- ◆ *Meet the needs of every child and celebrate individuality*
- ◆ *Help all our children to become responsible citizens*
- ◆ *Work in close partnership with parents and the local community*
- ◆ *Be a Family of Families!*

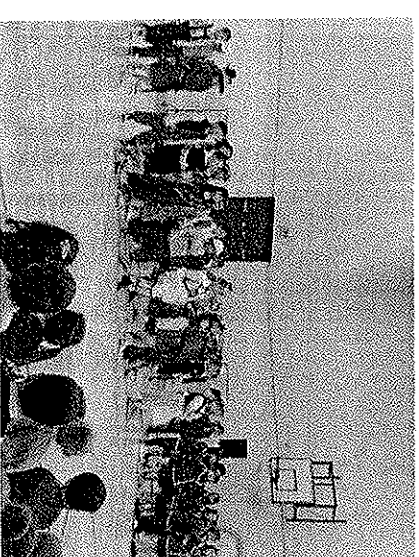
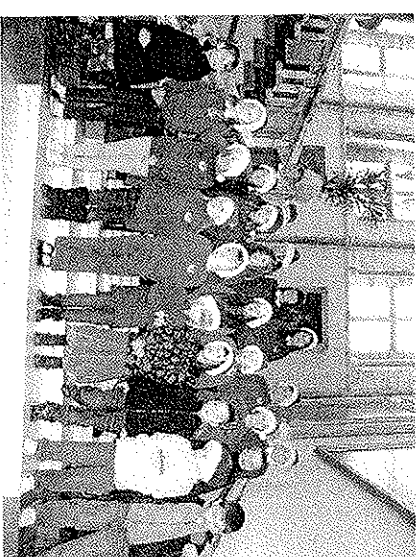
I want North Bute primary to help me to:

- ◆ Be a responsible citizen
- ◆ Be a successful learner
- ◆ Be a confident individual
- ◆ Be an effective contributor
- ◆ Be proud of my school
- ◆ Be hardworking
- ◆ Be honest
- ◆ Be well mannered
- ◆ Be caring
- ◆ Be happy
- ◆ Be fulfilled



And to ...

- ◆ Have fun
- ◆ Be environmentally aware
- ◆ Be proud of my heritage
- ◆ Feel part of a close family
- ◆ Have respect
- ◆ Help others
- ◆ Form close friendships
- ◆ Grow
- ◆ *Be all I can be!*



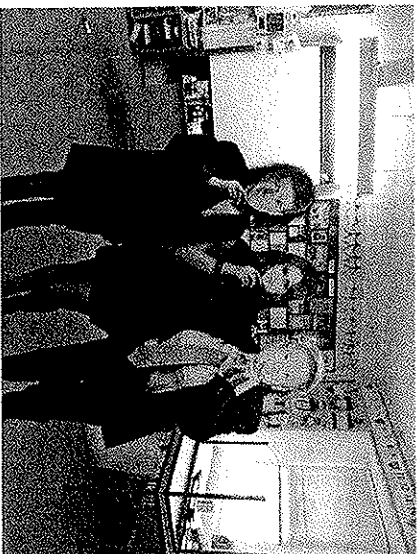
Priority	Progress to date	Impact/ benefits
<p>To continue to implement A Curriculum for Excellence</p>	<p>Staff have worked with all cluster schools in planning and developing 3-18 education. All staff are using active learning approaches, co-operative learning and Afifi strategies to deliver Acfe more effectively. Staff are becoming more confident working with experiences and outcomes. Staff have delivered at least three inter-disciplinary topics. Staff have used a whole school approach on one topic, culminating in an open day for the whole community. Staff have been trained in Coaching and Mentoring. Staff have reviewed planning formats, and have begun to use planners produced by Angus Council. New STAR books have been introduced to help pupils set targets and improve their learning. All teaching staff have met regularly with St. Andrew's staff as a Teacher Learning Community.</p>	<p>Pupils are more positive and motivated in their learning. Pupils' learning experiences are more enjoyable, meaningful and effective. Pupils are more aware of how to achieve success in their work. Teachers are reflecting regularly on their practice and how to improve</p>

Priority	Progress to date	Impact / Benefits
<p>To continue to improve our outdoor environment and outdoor learning.</p>	<p>Pupils, parents and staff have worked together to improve the outdoor environment. New planters have been bought and planted. New playground games have been painted. Playground furniture has been painted and varnished. New benches have been donated by Ardmalesh boatyard.</p> <p>Teachers take every opportunity to use this area for learning. Teachers also ensure they make full use of the environment around the school, including the village, beach, park, woods and Kames Castle.</p> <p>Mrs MacMillan has begun training in Forest schools and our first group of fourteen children have undertaken a series of forest schools' lessons with Level 4 and Level 3 trained leaders.</p> <p>The couple living in Bruoch Manse have offered us part of their garden as a school/ community allotment, and Bute Produce have offered to help us with this project.</p>	<p>Our playground area is looking much more attractive. All pupils are benefitting from learning outdoors.</p> <p>Pupils are enjoying using new games and benches at playtimes too.</p> <p>Pupils' learning is enhanced by using the local environment, and the community feels involved in the school.</p> <p>Pupils in the forest group have learned a lot about nature, using tools and teamwork. They will now use these skills when we extend this work to all classes.</p> <p>Plans are now in place for our community garden.</p>

Priority	Progress to date	Impact / Benefits
<p>To Improve ICT in all curricular areas.</p>	<p>Staff are identifying some ICT opportunities in forward plans. Staff are making more regular use of interactive whiteboards in daily lessons. Teachers and pupils have made excellent use of internet for research in topic work. Good use has been made of Education city to support Active learning in numeracy and Maths particularly. All classes use digital cameras effectively to support learning and provide evidence of learning.</p>	<p>Pupils are using ICT confidently on a daily basis to enhance their learning. We still need to look at progression of skills in ICT and developing our website.</p>

Fun in school this year

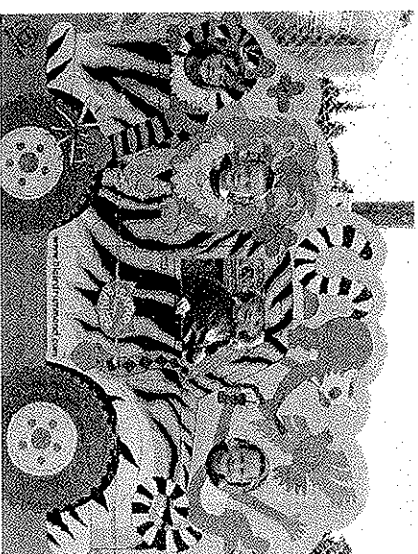
X factor



Forest schools



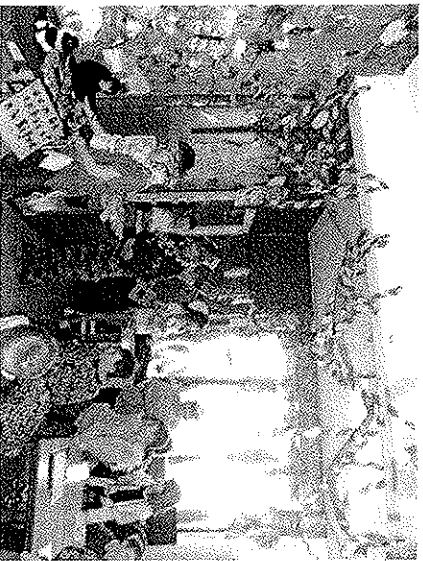
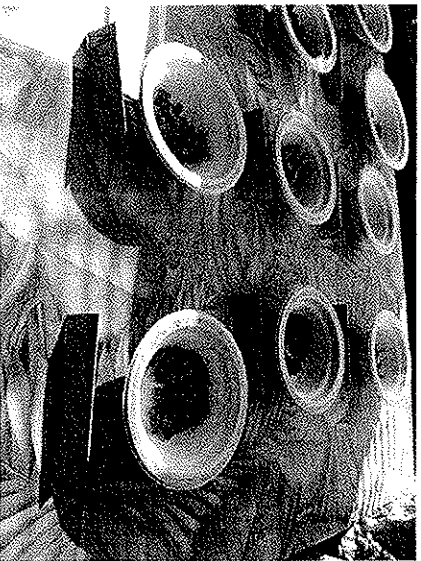
Trip to
Blair
Drummond



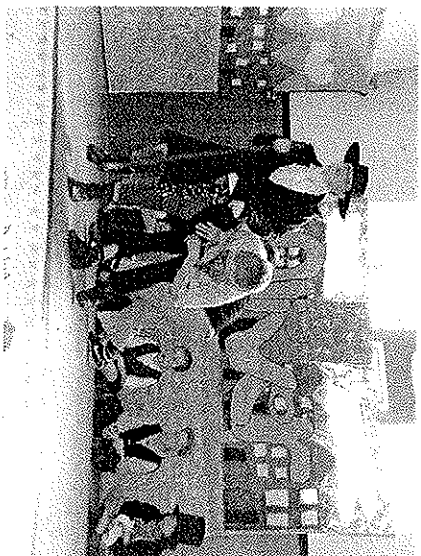
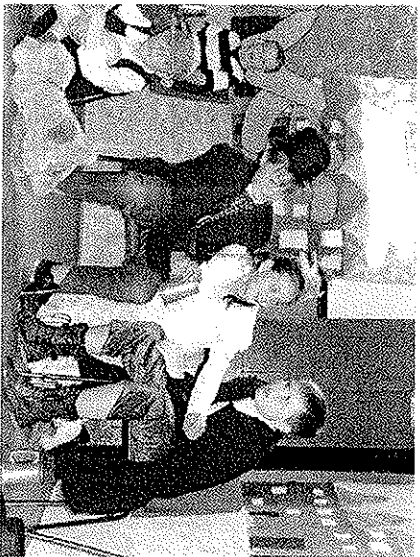
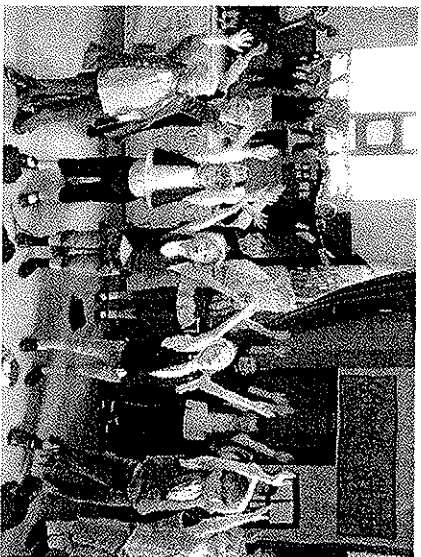
Bring and Buy
sale



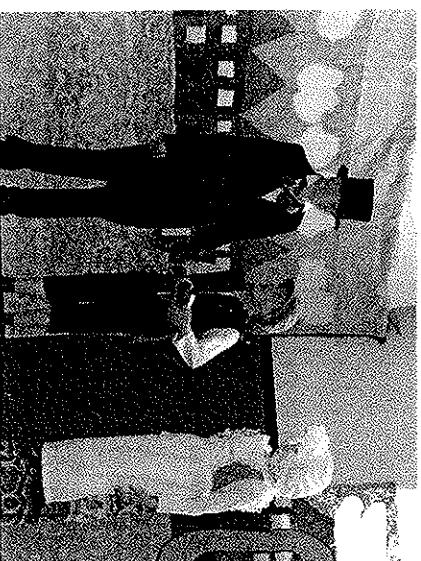
Rainforest Open Day



Oliver!



And there's more...



Vision and Leadership

The school has an ongoing system which involves seeking the views of staff, parents and pupils. Staff reflect upon learning and teaching regularly, and share good practice across the curriculum.

These monitoring procedures include:

- A process of self evaluation to identify areas of strength and areas for development. These areas for development are the basis for the school's annual improvement plan.
- Opportunities for the staff to work as a team.
- Involvement of parents and pupils by means of questionnaires and through discussions at pupil and parent council.

What our parents think we do well :

- The knowledge staff have of all children in the school.
- The caring family atmosphere, and welcoming ethos.
- The open door policy.
- The format of our reports and the clear, comprehensive information within them.
- The ways in which achievements are recognised and valued.
- The progress of all children, including those with additional support needs.
- The variety of activities on offer for all pupils.
- Performances and assemblies.

What our pupils think we do well:

- Making school fun.
- Making them feel safe and cared for.
- Listening to their worries.
- Listening to their views.
- Teaching them well.
- Involving the community.

Successes and Achievements

Although we are a small school with a roll of 52 pupils , our pupils achieve highly in many areas, and are spoken of highly in our community and throughout the island.

- ◆ Our performances for parents and the community throughout the year are commended highly by all.
These have included our fantastic nativity play, a Scottish assembly, Easter assembly, leavers assembly, dance in the park afternoon and a very successful musical production of Oliver!
- ◆ Various charities have been well supported by our pupils. In session 2010-2011 North Bute contributed to the following charities:
- ◆ Children in need £78
- ◆ RNLI £1067
- ◆ Cancer Research £553
- ◆ Comic relief £63
- ◆ Rotary club polio fund £61
- ◆ Clic sargeant £65

Total £1887

Improvement plan priorities

Overview of improvement priorities for next three years

Improvement priorities for next three years	Year of development
A Curriculum for Excellence	2009-2012
Learning and Teaching	2009-2012
ICT	2009-2011
Leadership at all levels	2009-2012
Improving School environment	2009-2011

Our main priorities for this year

To continue to implement A Curriculum for Excellence

**To further develop our eco school's work, and achieve green flag
status**

To continue to improve ICT in all curricular areas

Reason for development National Priority	Timescale Session 2011-2012	Criteria for Success Evidence of full Curriculum for Excellence being embedded. Pupils' learning will be more relevant, active and meaningful.
---	--------------------------------	---

Persons responsible
HT and class teachers
Mrs Martin – TLC leader

Target 1
To continue to implement A Curriculum for Excellence

Resources required
Management time
Staff development budget and CPD opportunities
Resources to support active learning

Task 1 Work with all cluster schools in developing 3-18 education	Task 2 Embed Aifl, co-operative learning and active learning into the context of A Curriculum for Excellence. Whole school involvement in forest schools work using all above methodologies.	Task 3 Implement Active Heinemann Maths and Big Writing in all stages to support effective learning and teaching in literacy and numeracy.	Task 4 Continue to develop inter-disciplinary learning topics.
---	---	--	--

<p>Task 5</p> <p>Develop the use of STAR books and PLP interviews to ensure all children are achieving full potential and keeping clear evidence of this.</p>	<p>Task 6</p> <p>Continue to revise short term, medium term and long term planning formats to support Acfe, ensuring clear differentiation for all pupils and coverage of all experiences and outcomes.</p>	<p>Task 7</p> <p>All staff will continue to be part of Teacher Learning community with Staff from St. Andrew's P.S to help us all to reflect and improve our learning and teaching.</p>
--	--	--

<p>Record of Impact / progress</p>

Reason for development School Priority	Timescale Sessions 2010-2012	Criteria for Success School will gain green flag status. School environment will be improved. Carbon footprint will be reduced.
--	--	--

Persons responsible
Mrs MacMillan and pupil council –litter
Mrs Hebdon and eco group – Improving school grounds
Mrs Watson and healthy living group – Zero Carbon Bute Initiative

Target 2
To further develop our eco schools work and gain green flag status

Resources required
Zero Carbon Bute
Bute Produce
Beachwatch Bute
Community helpers

Task 1 Pupil council, eco group and healthy living group will source help and resources to help implement their action plans.	Task 2 Action plans will begin to be implemented focusing on litter, school grounds and transport.	Task 3 Pupil council – seek ways to help the whole school to reduce litter and improve school environment. Healthy living group – work with Zero Carbon Bute to encourage walking cycling and bus travel, helping reduce Bute's carbon footprint. Eco group – work with Bute Produce to develop a school garden and encourage whole school usage.	Task 4 Prepare evidence files for each. Apply for Green flag.
--	---	--	--

Reason for development School Priority	Timescale Sessions 2010-2012	Criteria for Success All classes will be using ICT effectively to enhance learning in all curricular areas.
--	--	---

Persons responsible
All staff

Target 3
To improve ICT in all curricular areas

Resources required
Staff development time
Any ICT resources required

<p>Task 1 Incorporate ICT opportunities, including glow, in our planning for Acte experiences and outcomes.</p>	<p>Task 2 Staff identify training needs to fully implement these in all curricular areas.</p>	<p>Task 3 Arrange staff development to address these needs, internally and externally.</p>	<p>Task 4 Identify any resources needed to fully implement ICT in all curricular areas and make plans to finance these. Develop school website ensuring used and updated by all classes.</p>
--	--	---	---

Maintenance Agenda

- ◆ Enterprise education
- ◆ Partnership with parents
- ◆ Partnership with local and wider communities
- ◆ Development of additional support needs in line with ASL act
- ◆ Active schools
- ◆ School productions
- ◆ Partnership with council and contractors during building work/ repairs

Term 1												
17 Aug	24 Aug	30 Aug	North Bute Primary School	School Planner	Session 2010-2011							
Whole School Orientat. Child Protect. etc	Forward planning 4 hours	Staff Meeting 1 hour i-planner 1 hour	Staff Meeting 2 hours Active Heinemann	Curriculum dev Meeting 1 hour i-planner	Curriculum development - STAR books 1hr 30 mins	Staff Meeting 1 hour	Quality Improvement 2 hours					
Term 2												
18 Oct	25 Oct	8 Nov	15 Nov	22 Nov	29 Nov	7 Dec	14 Dec	21 Dec				
	Staff Meeting 2 hours Forward Planning	Meeting parents 5 hours	Staff Meeting 1 hour EIS 1 hour	Curriculum development Meeting 1 hour	Parents eve 4 hours	Staff Meeting 1 hour Enrichment Christmas lights 3 hours	Enrichment School nativity 3 hours					
Term 3												
10 Jan	17 Jan	24 Jan	31 Jan	14 Feb	21 Feb	6 Mar	13 Mar	27 Mar				
2 hours Forward Planning	Staff Meeting 2 hours Forward Planning	Staff Meeting 1 hour Self-evaluation	Staff Meeting 1 hour Self-evaluation	Curriculum development Meeting 1 hour	PDR/ PRD 4 hours	Staff Meeting 1 hour EIS 1hour	Staff Meeting 1 hour Target Setting Interim 1 hour	Curriculum dev Meeting 1 hour				
Term 4												
17 Apr	24 Apr	8 May	15 May	22 May	29 May	5 June	7 Jun	14 Jun	21 Jun	26 Jun		
Forward planning 2hrs	Pupil Reports 2 hours	Pupil reports 2 hours	Staff Meeting 1 hour Improvement Plan	Pupil Reports 2 hours	Parents evening 4 hours	Curriculum development meeting 2 hours	Quality Improvement 2 hours	Enrichment School show 6 hours	Staff meeting 2 hours	Staff meeting 2 hours		

Activities	Hours
Reporting	20
Parent meetings	20
Forward planning (long term plans, planning liaison, profiles, IEPs)	18
EIS	3
Curriculum/staff development	23
Staff meeting	27.5
Enrichment/additional activity (School Board, PTA)	15
Additional Preparation/Correction	20
Flexibility factor	25
Professional review and development	2.5
Quality Improvement process	15
Working with other agencies	1
Formal assessment	5
Total	195